

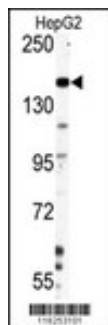
Nestin Antibody (S1409)

Peptide Affinity Purified Rabbit Polyclonal Antibody (Pab)

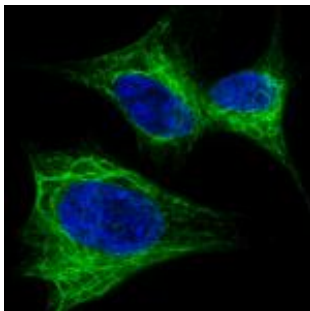
Catalog #	Applications	Reactivity	Accessions
AP2020d	WB,IHC,IF,FC,E	H	P48681
Concentration	Size	Isotype	Clone names
0.25 mg/ml	0.1 mg	Rabbit Ig	RB16253

Application data

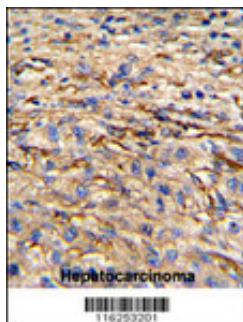
Calculated MW : 176704 Da



Western blot analysis of Nestin Antibody (S1409) (Cat.#AP2020d) in HepG2 cell line lysates (35ug/lane). NES (arrow) was detected using the purified Pab.

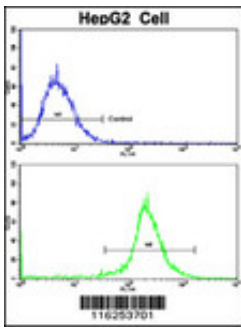


Fluorescent confocal image of SY5Y cells stained with AP2020d Nestin antibody. SY5Y cells were fixed with 4% PFA (20 min), permeabilized with Triton X-100 (0.2%, 30 min), then incubated with AP2020d Nestin primary antibody (1:200, 2 h at room temperature). For secondary antibody, Alexa Fluor® 488 conjugated donkey anti-rabbit antibody (green) was used (1:1000, 1h). Nuclei were counterstained with Hoechst 33342 (blue) (10 µg/ml, 3 min). Nestin immunoreactivity is localized mainly at the cytoskeleton of the SY5Y cells.



Formalin-fixed and paraffin-embedded human hepatocarcinoma reacted with Nestin Antibody (S1409), which was peroxidase-conjugated to the secondary antibody, followed by DAB staining. This data demonstrates the use of this antibody for immunohistochemistry; clinical relevance has not been evaluated.

Flow cytometric analysis of HepG2 cells using Nestin Antibody (S1409)(bottom histogram) compared to a negative control cell (top histogram). FITC-conjugated goat-anti-rabbit secondary antibodies were used for the analysis.



Nestin Antibody (S1409) Citations

- [May R et al. Identification of a novel putative pancreatic stem/progenitor cell marker DCAMKL-1 in normal mouse pancreas. Am J Physiol Gastrointest Liver Physiol. 2010 Aug;299\(2\):G303-10.](#)

Gene ID Gene symbol

10763 NES

Other names

NES; Nestin

Target/specificity

This Nestin antibody is generated from rabbits immunized with a KLH conjugated synthetic peptide between 1395~1425 amino acids surrounding S1409 of human NES.

Application notes

The suggested dilution is:

ELISA ~ 1:1,000

Western blotting ~ 1:100~500

Immunohistochemistry ~ 1:50~100

Flow cytometric ~ 1:10~50

IF ~ 1:200

Format

Purified polyclonal antibody supplied in PBS with 0.09% (W/V) sodium azide. This antibody is purified through a protein A column, followed by peptide affinity purification.

Storage

Maintain refrigerated at 2-8 deg C for up to 6 months. For long term storage store at -20 deg C in small aliquots to prevent freeze-thaw cycles.

Precautions

Nestin Antibody (S1409) is for research use only and not for use in diagnostic or therapeutic procedures.

Background

Nestin is a class VI intermediate filament protein expressed predominantly in stem cells of the neural tube but absent from virtually all differentiated CNS cells. In the CNS, nestin is downregulated upon differentiation and replaced by neurofilaments. Transient expression of nestin has been postulated as a key step committing cells to the neural differentiation pathway. Nestin expression has also been observed in pancreatic hematopoietic stem cell populations.

References

Yaworsky, P.J., et al., Dev. Biol. 205(2):309-321 (1999). Dahlstrand, J., et al., J. Cell. Sci. 103 (Pt 2), 589-597 (1992).

Provided below are standard protocols that you may find useful for product applications.

- [Western Blot](#)
- [Blocking Peptides](#)
- [Dot Blot](#)
- [Immunohistochemistry](#)
- [Immunofluorescence](#)
- [Immunoprecipitation](#)
- [Flow Cytometry](#)
- [Cell Culture](#)

Provided below are standard MSDS documents for our selection of products

- [Antibodies](#)
- [cDNA](#)
- [Cell/Tissue Lysates](#)
- [Over Expression Lysate](#)
- [Recombinant Protein](#)
- [siRNA](#)
- [Synthetic Peptide](#)
- [Tissue Section](#)